



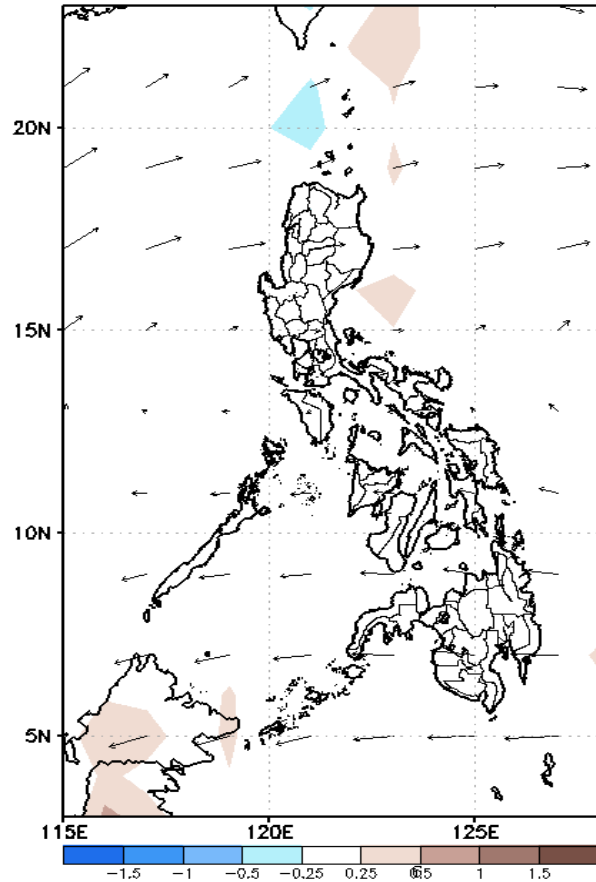
Week 1 & Week 2 Forecast for the Philippines using GEFS Model



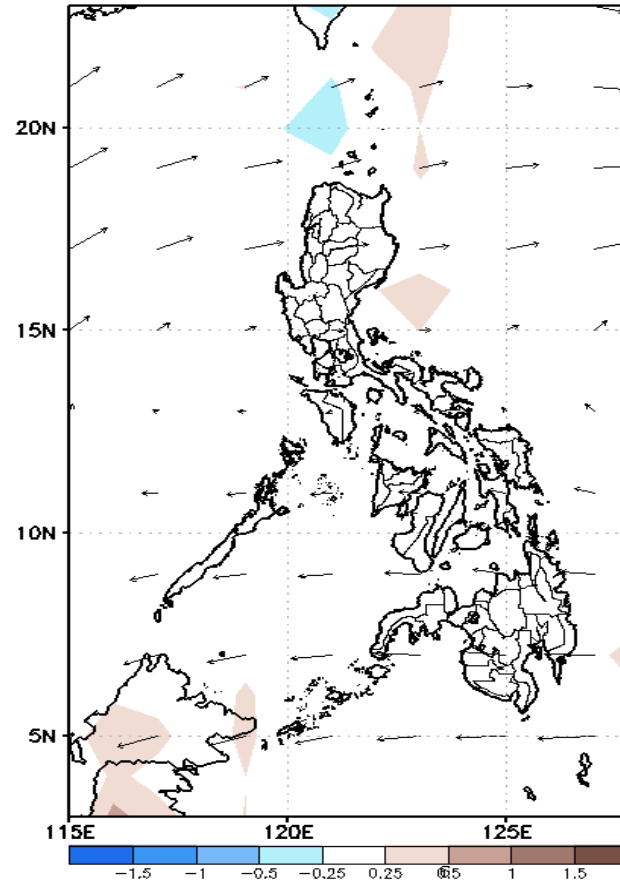
GEFS Week-1 Forecasts: Divergence & Wind Anomaly

Week 1: Oct 14-20, 2021

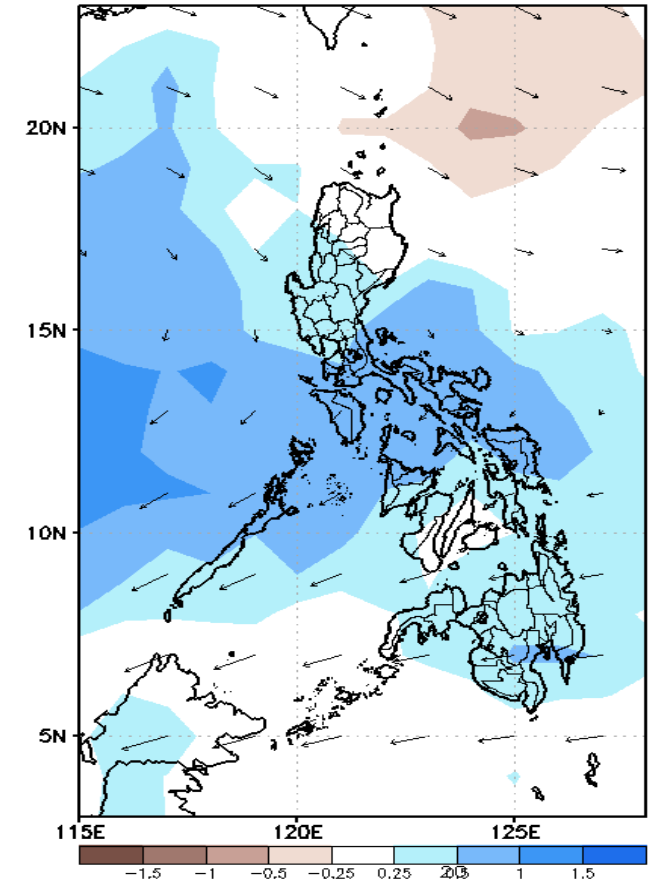
GEFS Week-1 850-hPa Divergence and Wind Anomoc
Valid: 20211014 - 20211020



GEFS Week-1 700-hPa Divergence and Wind Anomoc
Valid: 20211014 - 20211020



GEFS Week-1 200-hPa Divergence and Wind Anomoc
Valid: 20211014 - 20211020

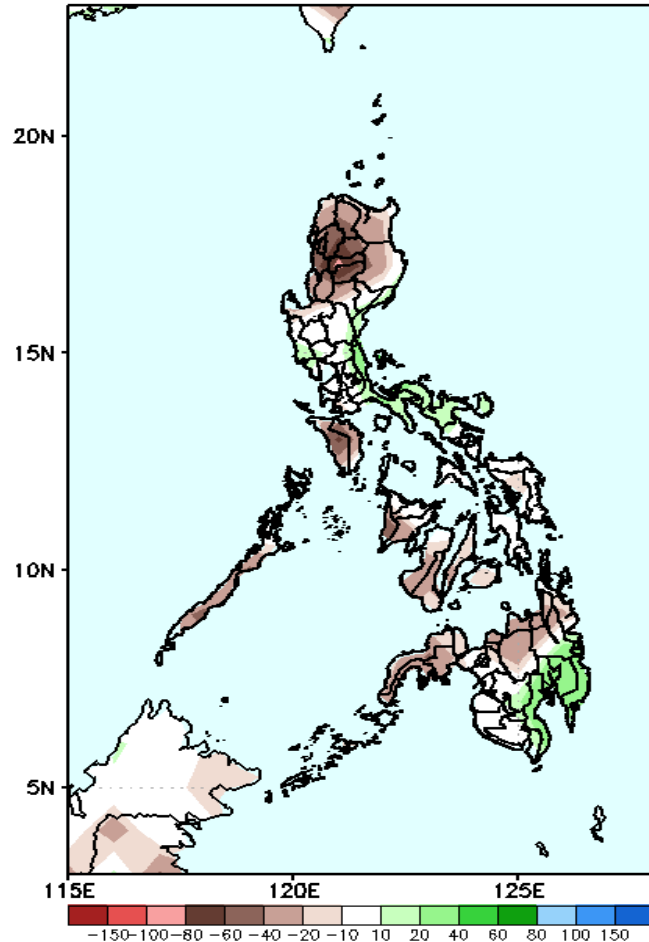


Upper and low level Divergence suggest likelihood of precipitation in most parts of the country except the northern part of Northern Luzon. Easterlies affecting most parts of the country attributing to light to moderate rains due to thunderstorms during the forecast period.

Precipitation Anomaly and Exceedance Probability > 25/50 mm

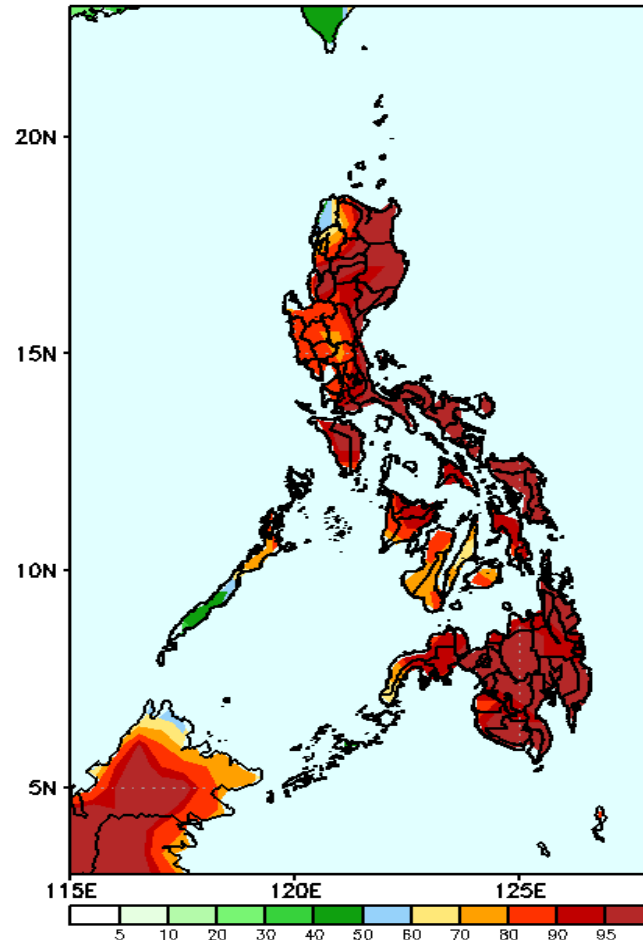
Week 1: Oct 14-20, 2021

GEFS Week-1 Precip Anomaly
Valid: 20211014 - 20211020



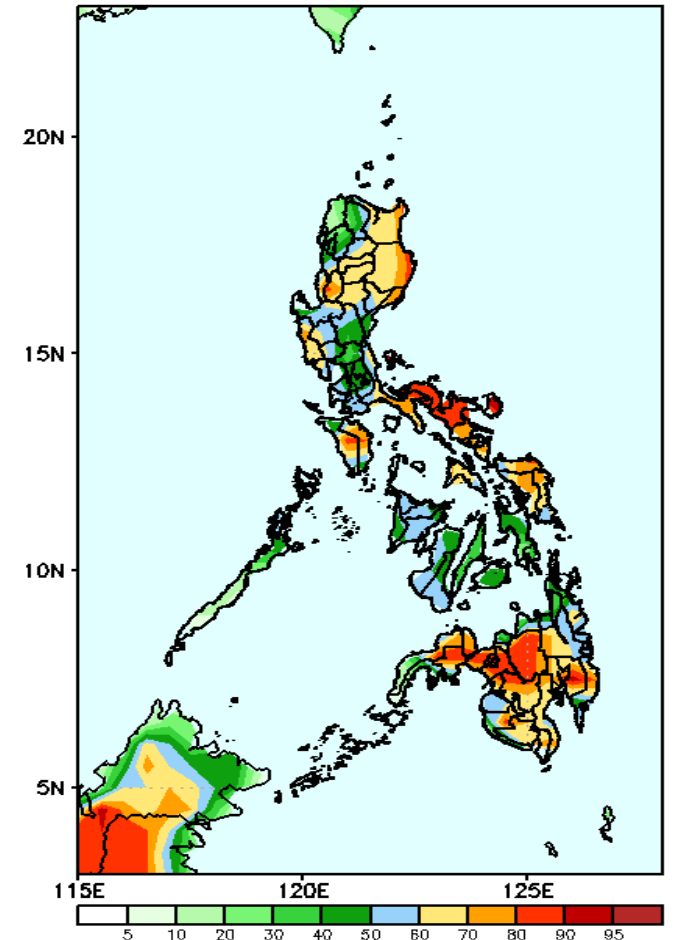
Rainfall deficit of 20-80mm in most parts of the country except in Bicol & Davao Region where there is 20-50mm increase during the forecast period.

GEFS Week-1 Exceedance Prob. > 25mm
Valid: 20211014 - 20211020



High probability of rainfall to exceed 25mm in most parts of the country during the forecast period.

GEFS Week-1 Exceedance Prob. > 50mm
Valid: 20211014 - 20211020

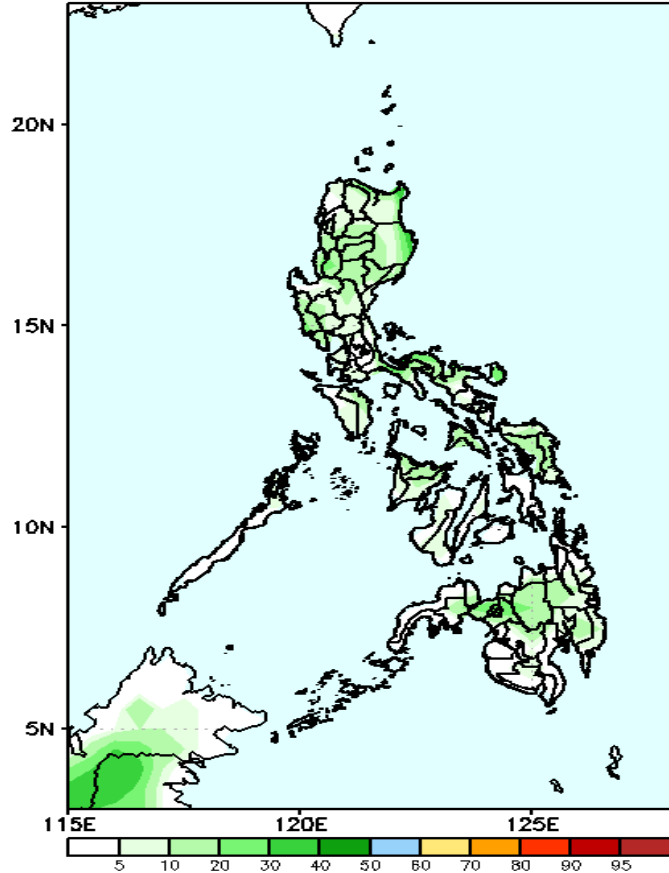


60-95% probability of rainfall to exceed 50mm in Cordillera Region, Cagayan Valley, Southern Luzon, Eastern Visayas and most parts of Mindanao while less likely for the rest of the country during the forecast period.

Exceedance Probability > 100/150/200 mm

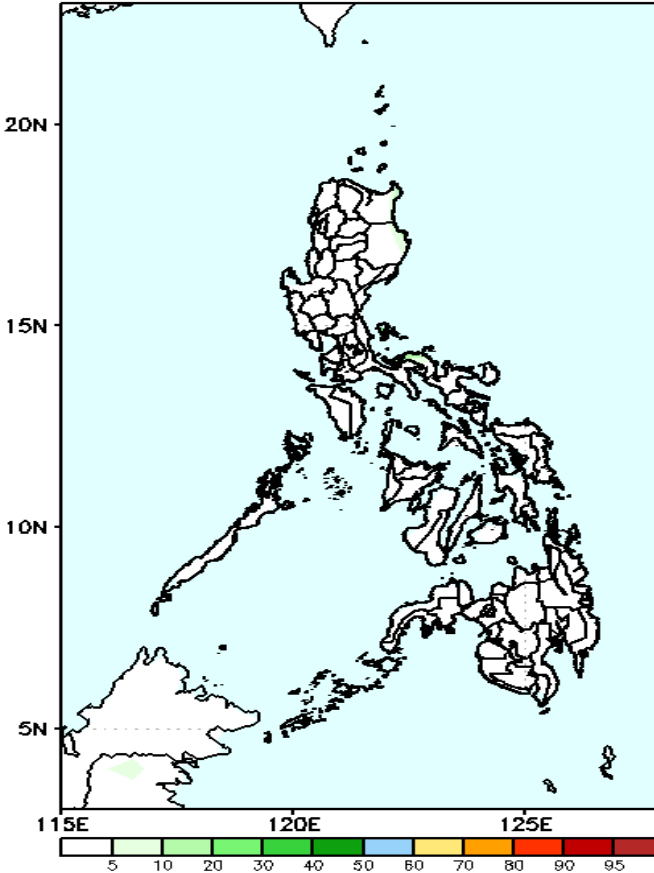
Week 1: Oct 14-20, 2021

GEFS Week-1 Exceedance Prob. > 100mm
Valid: 20211014 - 20211020



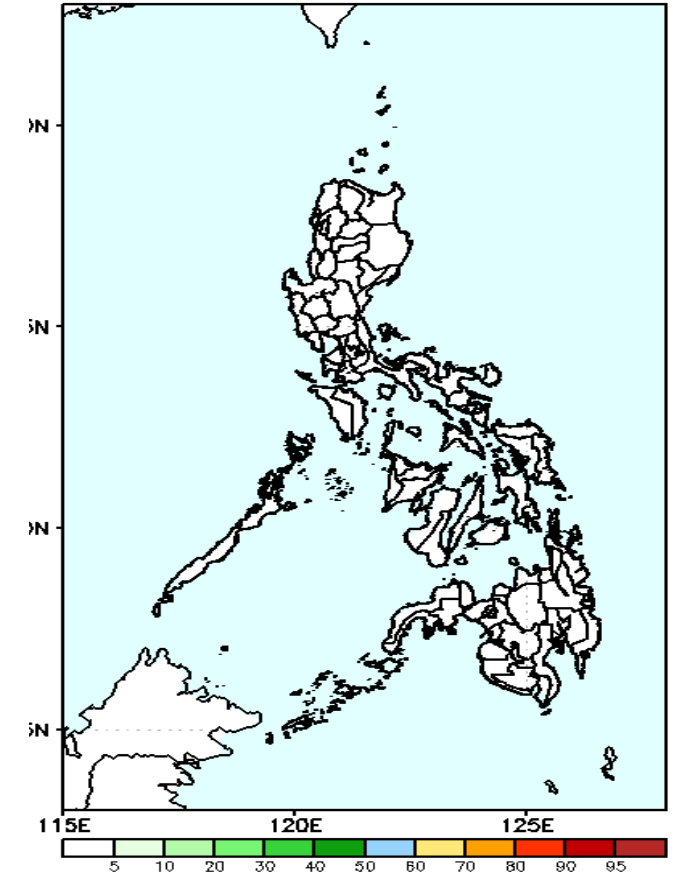
Less probability of rainfall to exceed 100mm in most parts of the country is expected during the forecast period.

GEFS Week-1 Exceedance Prob. > 150mm
Valid: 20211014 - 20211020



Less probability of rainfall to exceed 150mm in most parts of the country is expected during the forecast period.

GEFS Week-1 Exceedance Prob. > 200mm
Valid: 20211014 - 20211020

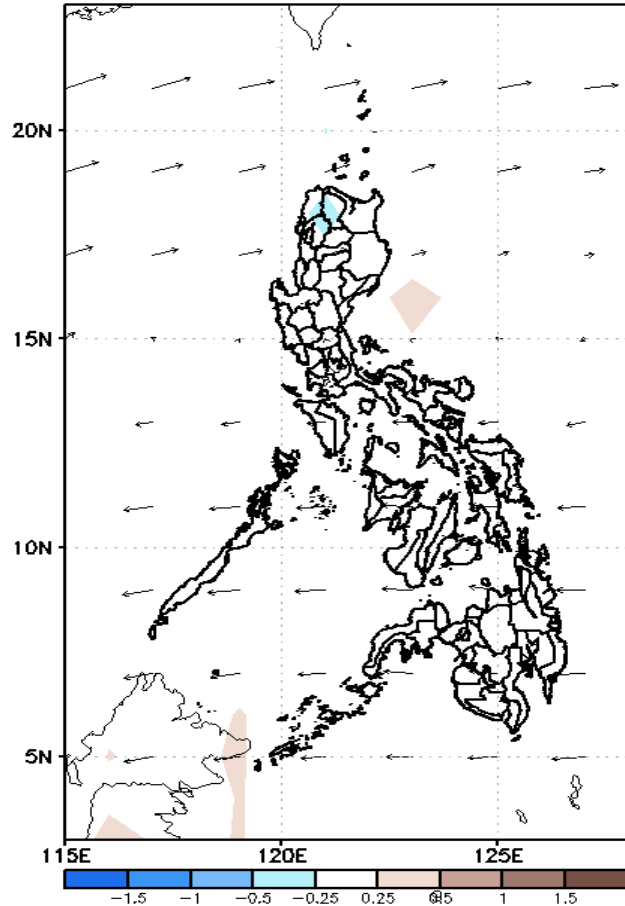


Less probability of rainfall to exceed 200mm in most parts of the country is expected during the forecast period.

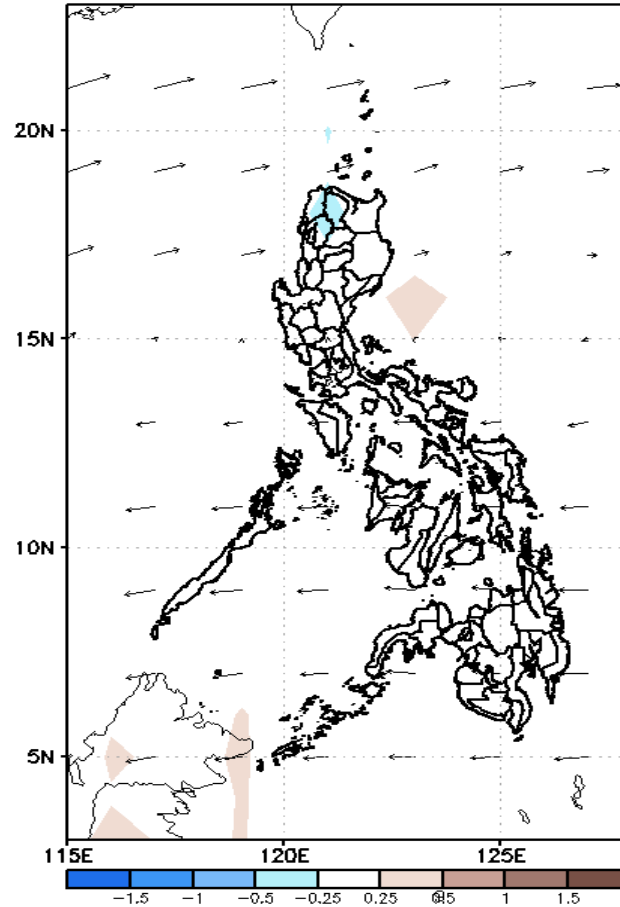
GEFS Week-2 Forecasts: Divergence & Wind Anomaly

Week 2: Oct 21-27, 2021

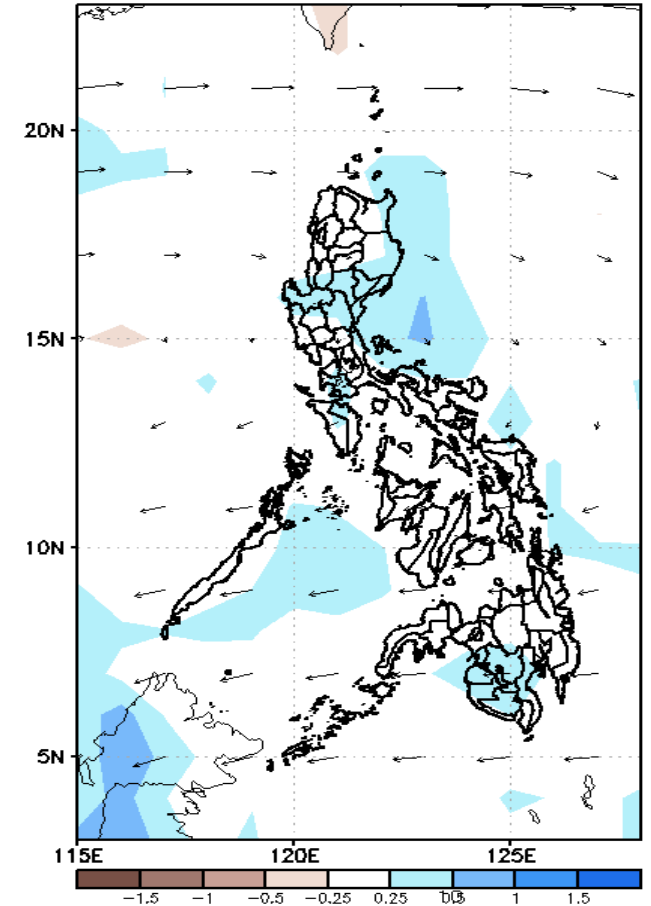
GEFS Week-2 850-hPa Divergence and Wind Anom
Valid: 20211021 - 20211027



GEFS Week-2 700-hPa Divergence and Wind Anom
Valid: 20211021 - 20211027



GEFS week-2 200-hPa Divergence and Wind Anom
Valid: 20211021 - 20211027

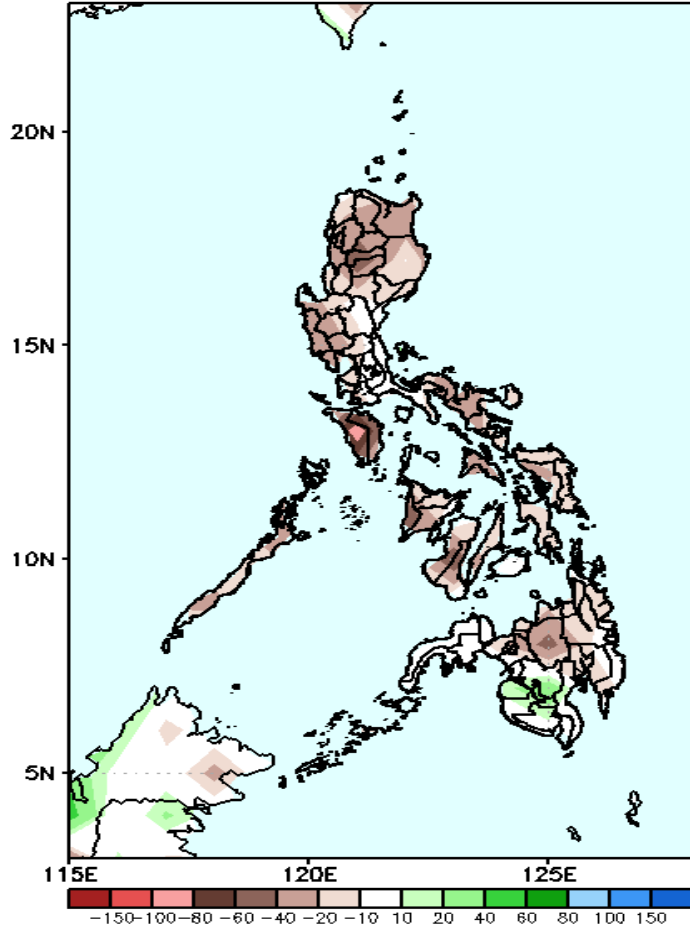


Upper and low level Divergence suggest less likelihood of precipitation in most parts of the country except in parts of Northern Luzon and Western Mindanao. Easterlies affecting most parts of the country attributing to light to moderate rains due to thunderstorms during the forecast period.

Precipitation Anomaly and Exceedance Probability > 25/50 mm

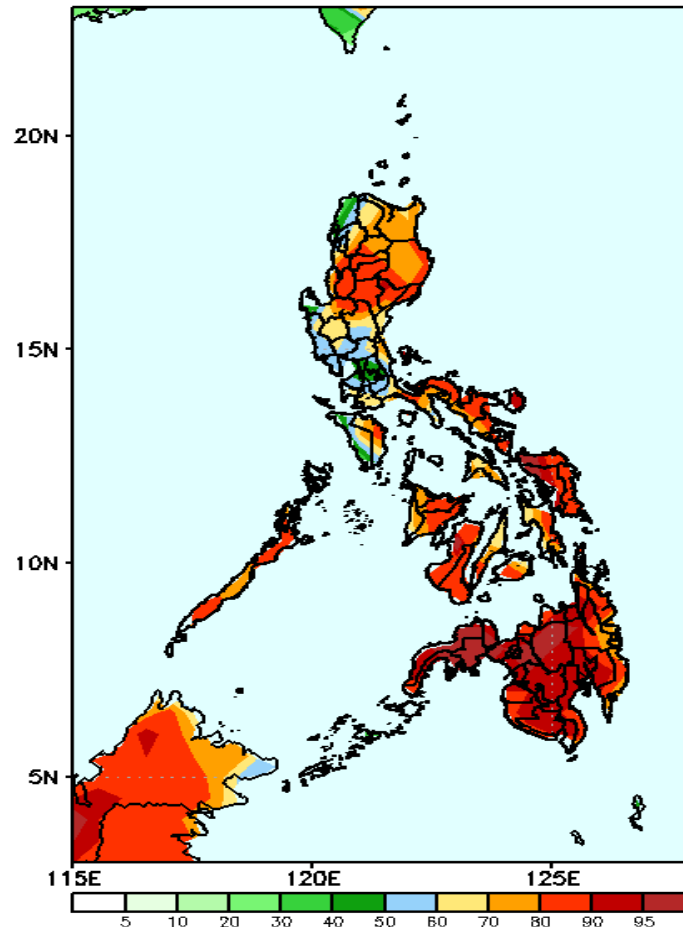
Week 2: Oct 21-27, 2021

GEFS Week-2 Precip Anomaly
Valid: 20211021 - 20211027



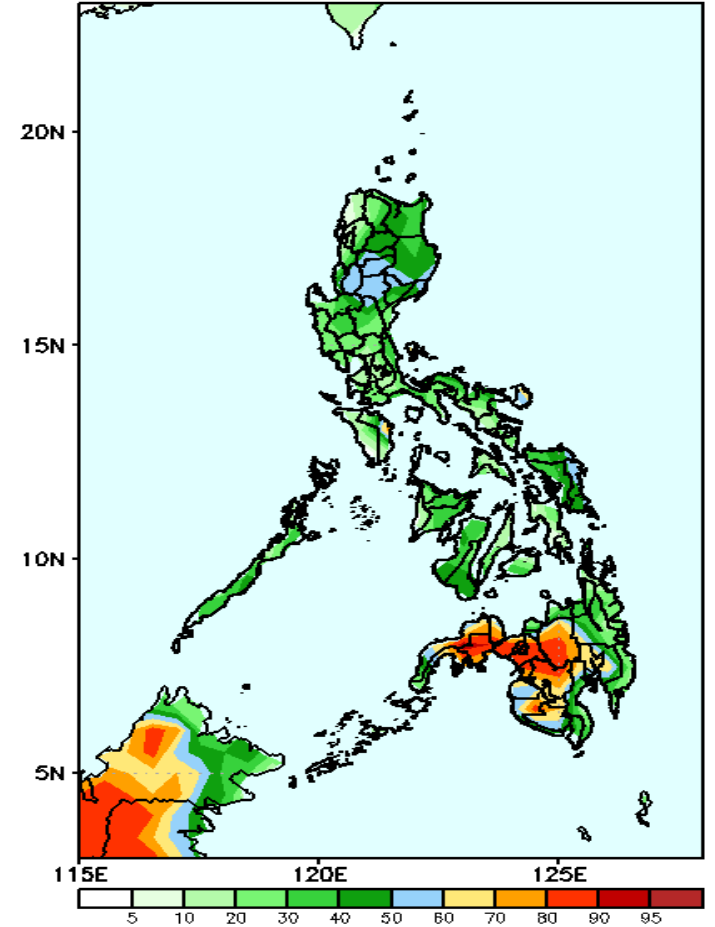
Rainfall deficit of 20-80mm in Cordillera Region, most parts of Visayas and Isabela during the forecast period.

GEFS Week-2 Exceedance Prob. > 25mm
Valid: 20211021 - 20211027



High probability of rainfall to exceed 25mm in most parts of the country during the forecast period.

GEFS Week-2 Exceedance Prob. > 50mm
Valid: 20211021 - 20211027

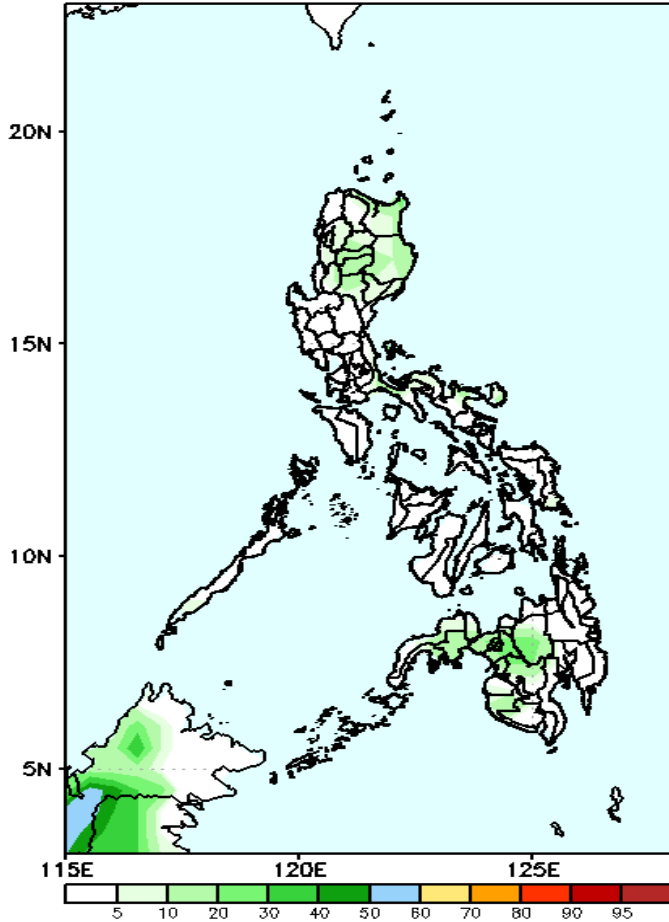


High probability of rainfall to exceed 50mm in western parts of Mindanao including Bukidnon while less likely for rest of the country during the forecast period.

Exceedance Probability > 100/150/200 mm

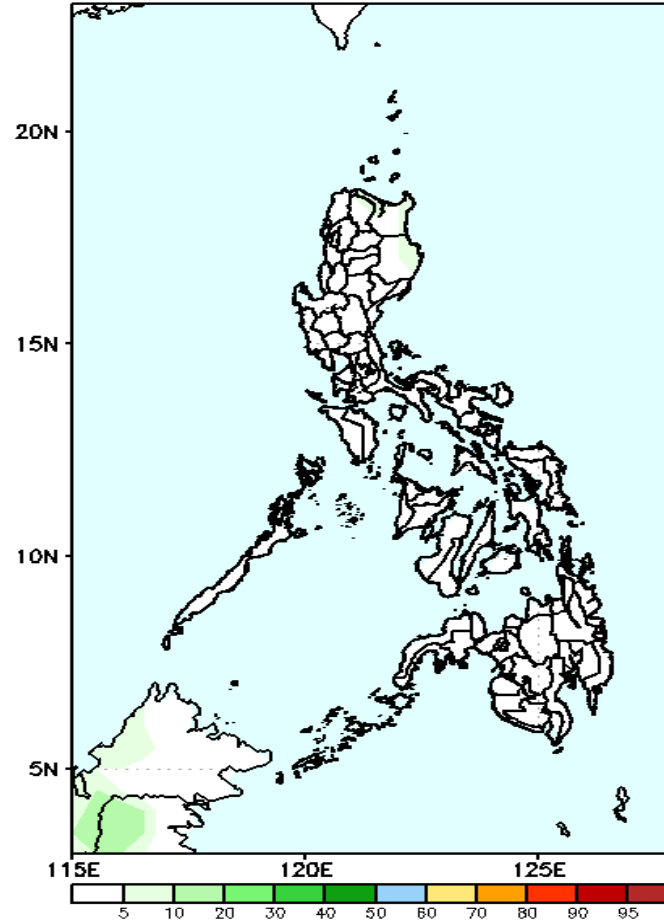
Week 2: Oct 21-27, 2021

GEFS Week-2 Exceedance Prob. > 100mm
Valid: 20211021 - 20211027



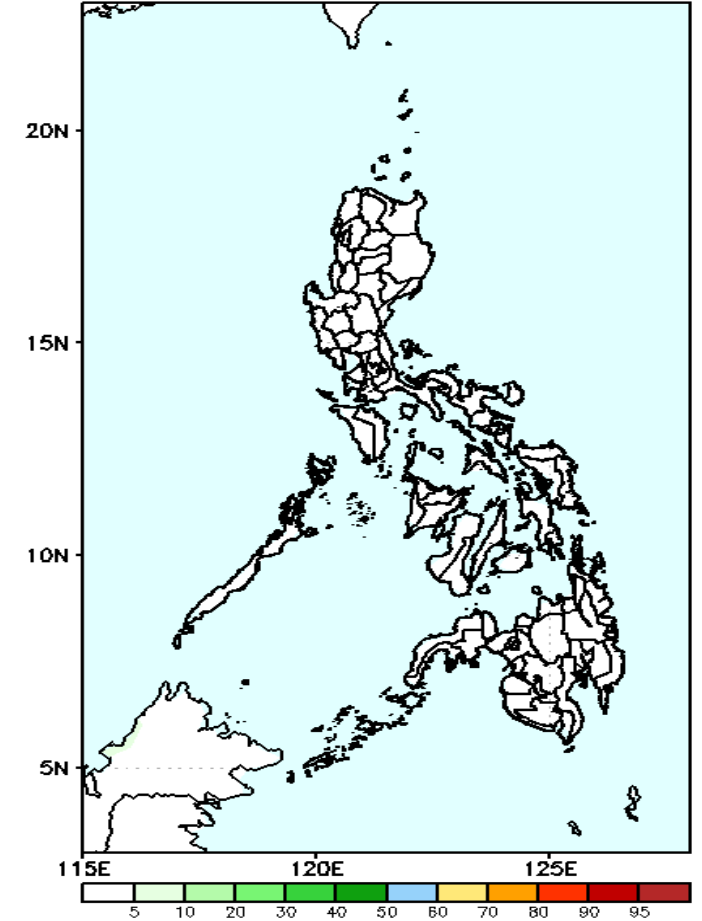
Less probability of rainfall to exceed 100mm in most parts of the country is expected during the forecast period.

GEFS Week-2 Exceedance Prob. > 150mm
Valid: 20211021 - 20211027



Less probability of rainfall to exceed 150mm in most parts of the country is expected during the forecast period.

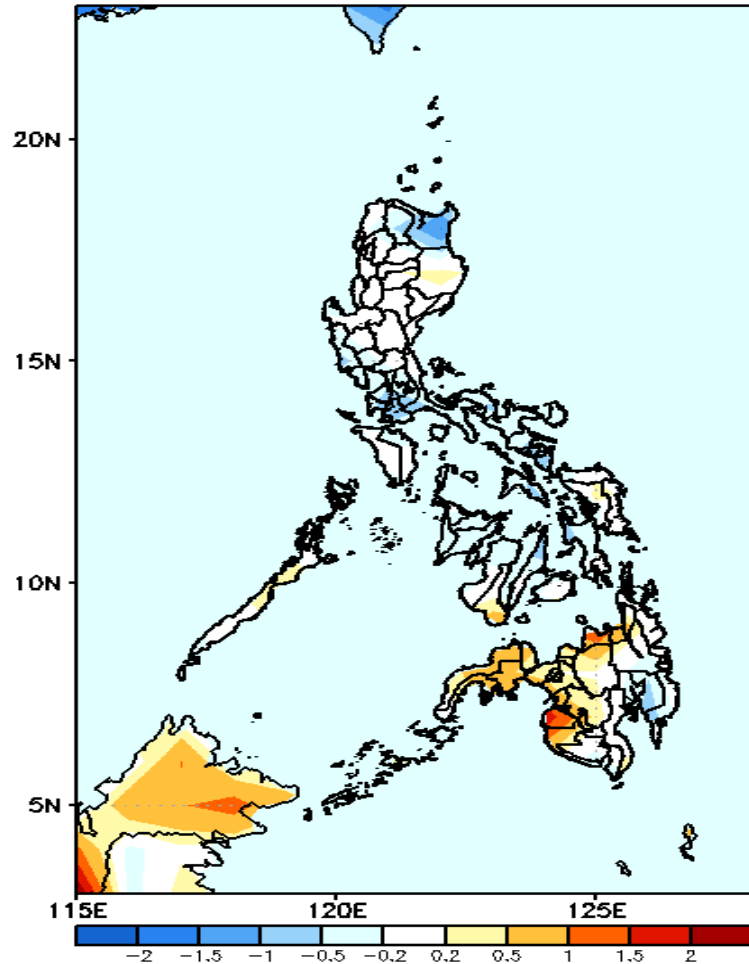
GEFS Week-2 Exceedance Prob. > 200mm
Valid: 20211021 - 20211027



Less probability of rainfall to exceed 200mm in most parts of the country is expected during the forecast period.

GEFS Week-1 & 2 Forecasts: T2m Anomaly

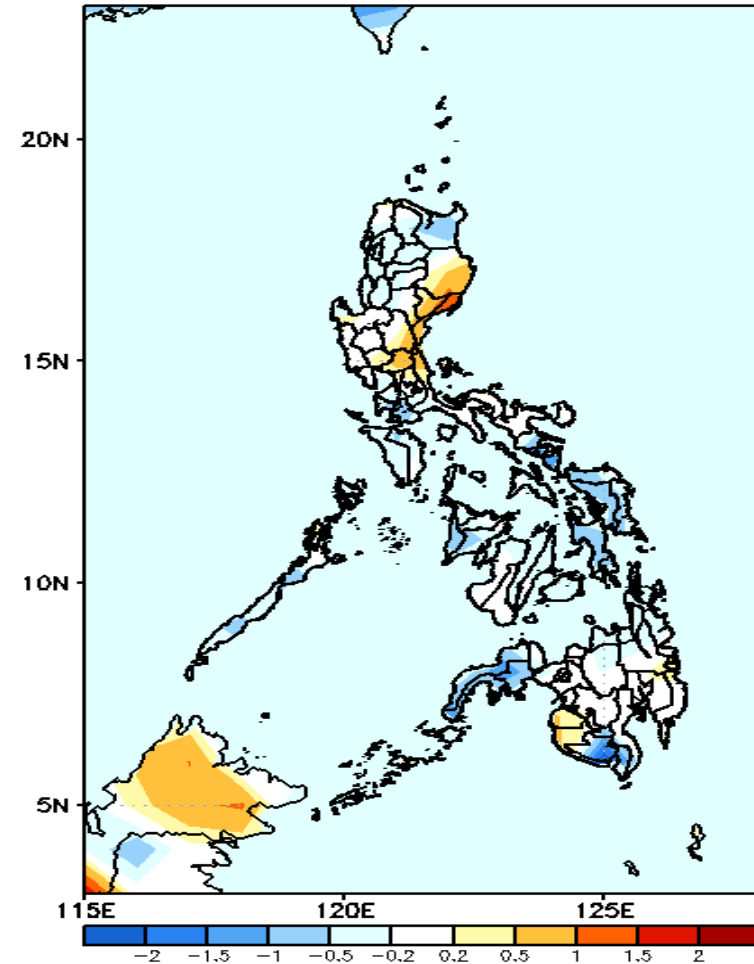
GEFS Week-1 T2m Anomaly
Valid: 20211014 - 20211020



2m Temperature Week 1: Oct 14-20, 2021

Average to slightly cooler than average surface air temperature will likely experience in most parts of Luzon and Visayas while slightly warmer to warmer than average temperature in most parts of Mindanao during the forecast period.

GEFS Week-2 T2m Anomaly
Valid: 20211021 - 20211027



2m Temperature Week 2: Oct 21-27, 2021

Average to slightly cooler than average surface air temperature will likely experience in most parts of the country except in eastern parts of Isabela & Central Luzon where slightly warmer temperature is expected during the forecast period.